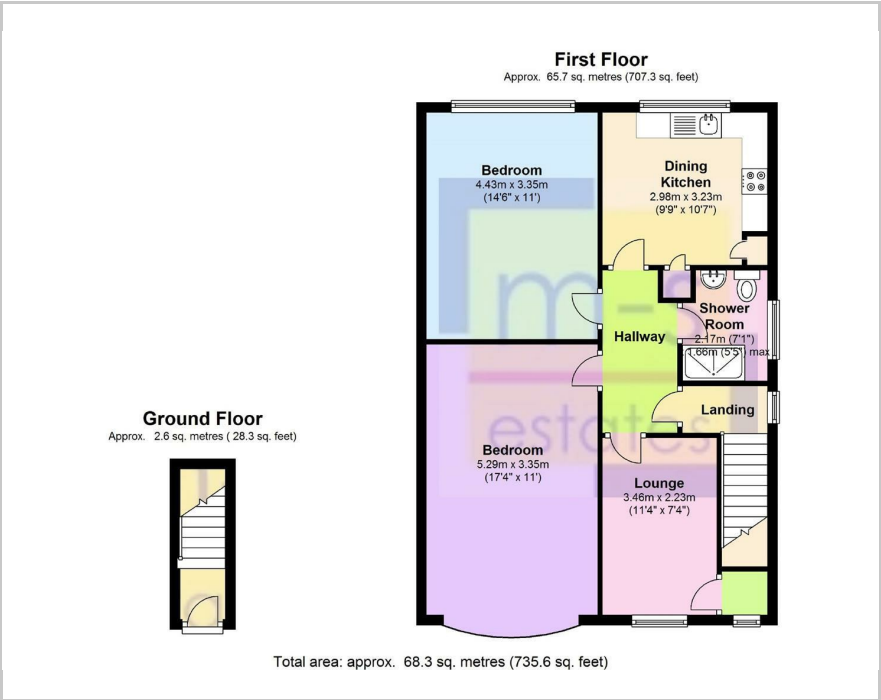




368 Derby Road, Nottingham, NG7 2DX  
£260 Per Week



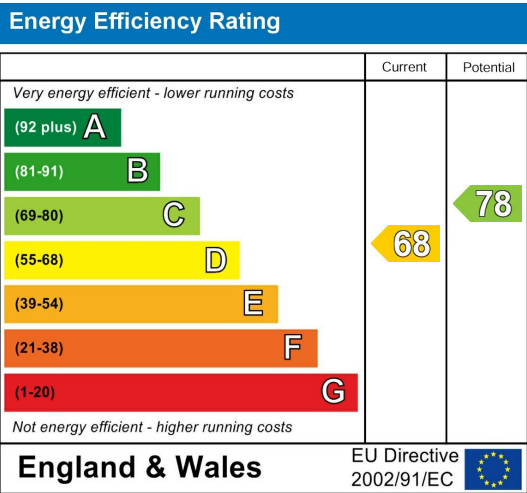
Floor Plan



Area Map



- STUDENT ACCOMMODATION
- 2 Bedroom first floor maisonette
- 2 Double bedrooms
- Well presented throughout
- Modern kitchen and bathroom
- Off-road parking space
- Opposite Lenton Park
- Close to QMC and Jubilee Campus
- Excellent location



These particulars, whilst believed to be accurate are set out as a general outline only for guidance and do not constitute any part of an offer or contract. Intending purchasers should not rely on them as statements of representation of fact, but must satisfy themselves by inspection or otherwise as to their accuracy. No person in this firm's employment has the authority to make or give any representation or warranty in respect of the property.